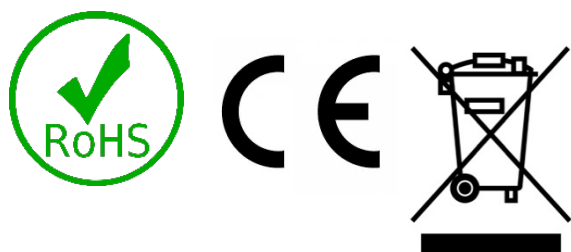


DC leakage current filter

KM-DCxxx



CERTIFICATION, COMPATIBILITY



Compliant with:

LVD 2014/35/EU
EMC 2014/30/EU
ROHS directive 2014/65/EU

RESTRICTIONS

- The DC leakage current filter can only be used with the delivered current sensor KM-DCS10
- The DC leakage current filter can only be used in a TN power system.

FEATURES

- Universal AC input range (85 – 250VAC)
- Compact size
- Real time filtering
- Plug and play installation
- Designed for leakage currents up to 100mA (higher current on request)
- DIN rail mountable
- IP22 rated

APPLICATIONS

- PV systems
- Charging station
- DC/AC conversions
- Offshore charging stations

ORDERING INFORMATION

PART NUMBER	CURRENT RANGE	ENCLOSURE	BODY SIZE (mm)
KM-DC020	0 – 20 mA	DIN Rail	53.6x90x60.7
KM-DC050	0 – 50 mA	DIN Rail	53.6x90x60.7
KM-DC100	0 – 100 mA	DIN Rail	53.6x90x60.7

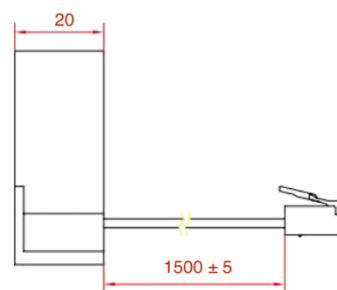
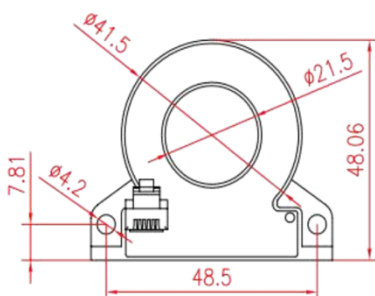
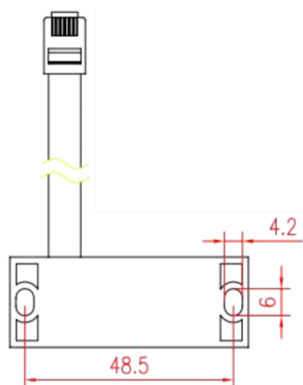
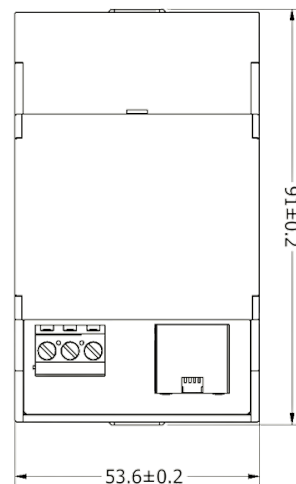
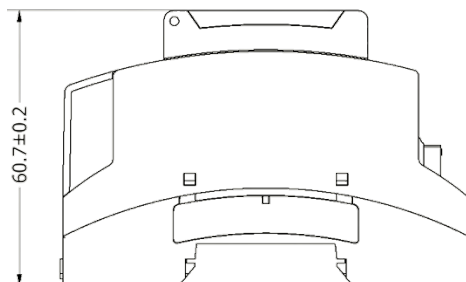
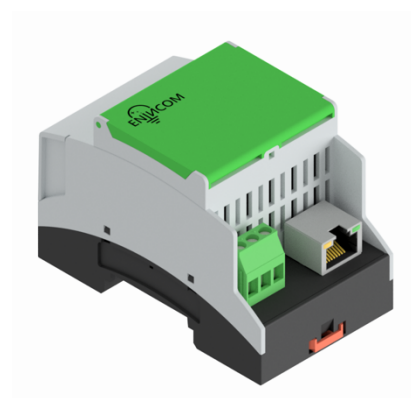
PRODUCT DESCRIPTION

The DC leakage current filter is an electrical device specially designed to solve the problem of DC leakage current caused by systems where DC energy is converted into AC energy.

DC leakage current is current that flows from a DC circuit to the ground via the ground conductor or the metallic infrastructure of a building/system.

Example of such systems are photovoltaic inverters, electric vehicle charging stations, windmills, etc.

CHARACTERISTICS



MECHANICAL CHARACTERISTICS

Parameters			
	Filter	Sensor	Units
Length	90.00	48.50	mm
Width	53.60	20.00	mm
Height	61.00	48.06	mm
Net weight	120g	80g	g
Fixation (DIN Rail)	TS35, TS32		-

THERMAL CHARACTERISTICS

Parameters				
	Min	Typ	Max	Units
Filter				
Operating amb. temperature	-10	25	50	°C
Storage amb. temperature	-10	-	70	°C
Sensor				
Operating amb. temperature	-15	25	50	°C
Storage amb. temperature	-40	-	70	°C

CONNECTION CHARACTERISTICS

Parameters				
Power supply	PCB terminal block			
Sensor	RJ45 connector			
	Min	Typ	Max	Units
Clamping range terminal block	2.5	-	4	mm ²

ELECTRICAL CHARACTERISTICS

Parameters				
	Min	Typ	Max	Units
Input voltage AC (50/60Hz)	80	230	280	Vac
Current consumption (230Vac)				
KM-DC020	-	0.86	-	mA
KM-DC050	-	1.50	-	mA
KM-DC100	-	0.22	-	mA
Filtering Accuracy	-	1	-	mA